

CATALOG OF UN-EXHIBITED JEWELRY AND OBJECTS



Throughout her life, Doris Duke collected jewelry and small decorative objects. Her acquisitions covered a wide range of artistic and intrinsically valuable pieces, from carefully selected, elaborate jewels set with diamonds and precious stones at the vanguard of designs, styles, and techniques to unassuming jewels she purchased to wear in a casual way or to complement particular outfits. If something caught her eye, she just bought it.

The preceding material in this catalog discusses and illustrates those pieces judged by the authors as the most important in the Doris Duke collection. The following illustrated listing of jewelry and objects comprise the extant remainder of her collection. While it includes representations from major jewelry houses such as Cartier, Tiffany & Co., Paul Flato, Seaman Schepps, and Van Cleef & Arpels, as well as objects from Gucci and Bulgari, a significant portion consists of unmarked jewelry from other American makers as well as figural brooches of animals, birds, and flowers, an assortment of rings, some with the stones removed, bead necklaces, and groups of loose gemstones that she probably intended to have made into jewelry.

Similarly, when she traveled to India and Southeast Asia, Doris Duke frequently purchased jewelry from the area, not only major pieces but often simpler jewelry she found attractive or representative of a particular region. Looking at this part of her collection, one discerns certain patterns. Enameled rigid bangles seemed to be favorite choices, most likely because they were so easy to wear and colorful. She had a penchant for long, dangling ear pendants, probably to take advantage of her tall stature. She also collected enameled buttons suitable for sewing on her garments.

It is clear that, regardless of the monetary value, Doris Duke chose consistently, guided by a well-defined aesthetic, relying on her unerring eye to identify her selections. She thus imprinted something of herself onto even the humblest pieces she acquired. We can be grateful she did.

111. and 112.
Dress set and scarf pin

Dress set
 American, c. 1900
 Mother-of-pearl, diamonds, gold
 Scarf pin
 English, c. 1900
 Sapphire, diamonds, gold
 L: 2 3/4 inches

On April 11, 1955, a notation in the Doris Duke Charitable Foundation archives: "...diamond & sapphire stick pin (500) from Mrs. Duke to DD." Upon her mother's death in 1962, Doris Duke inherited a "sapphire and diamond stick pin-6 round diamonds (old mine, off color)."



116. Guard ring
 American
 Diamonds, platinum
 From the wear on this ring, it was probably Nanaline Duke's guard ring.



117. Two coins



113. Collection of ten gold coins
 Comprising one ten-dollar piece, two sovereigns, one Egyptian, four five-dollar pieces, a one-dollar piece, and a twenty-franc piece



118. Gold and enamel box
 Swiss, Late 19th century
 Gold, cloisonné enamel
 L: 3 1/2 inches



114. Seed pearl demi-parure
 Comprising brooch and earrings
 American, c. 1880
 Seed pearls, foil-backed gemstones, mother-of-pearl, string



119. Group of miscellaneous jewelry
 Comprising a lapis lazuli heart pendant on gold chain, a white jade and oriental character pendant, a gold three coin ring, an opal and gold baby ring, one jade frog earscrew, a freshwater pearl and beryl charm necklace, an amethyst and silver swizzle stick.



115. Group of four rings
 American, c. 1960s
 One with gold, diamonds
 One with coral, diamonds, gold
 One with coral, diamonds, gold, platinum
 One with gold, diamond



120. Open-face gold pocketwatch
 Hamilton Watch Co., Lancaster, Pennsylvania, c. 1910
 Gold, steel
 H: 2 1/2 inches
 On case, monogram "WIP" for Walker Patterson Inman



121. Carved opal and diamond pansy brooch

American, c. 1895
Carved opal, diamonds, gold
H: 1 ½ inches



126. Fob watch/brooch

c. 1935
Silver, stainless steel, leather
L: 2 ½ inches



122. Diamond and enamel forget-me-not brooch

American, c. 1895
Enamel, diamonds, gold
H: 1 ½ inches



127. Sapphire, ruby, and diamond torsade necklace

American, c. 1960
Cabochon sapphire beads, cabochon sapphires, cabochon rubies, gold, platinum



123. Opal and diamond floral bangle

American
c. 1895
Gold, opal, diamonds, enamel



128. Two opal and gold rings and a pair of earrings

American, c. 1960
Opals, gold



124. Two rings

c. 1935
One with diamonds set in platinum by Cartier
One with rubies set in platinum, unmarked



129. Sapphire and diamond ring

American, c. 1960
Sapphire, diamonds, gold, platinum
Approximate weight of sapphire: 5.60 carats



125. Diamond and sapphire tassel pendant

c. 1905
Diamonds, sapphires, platinum
L: 1 ¾ inches



130. Diamond wristwatch

Le Coultre, Geneva, c. 1950-55
Diamonds, platinum, steel, glass
L: 7 inches
Doris Duke purchased this wristwatch at Parke-Bernet Galleries in New York on November 20, 1969, for \$7,000.



131. Emerald and diamond ring
 Tiffany & Co., New York, c. 1920
 Emerald, diamonds, platinum
 Doris Duke may have worn this ring
 as a young girl.



136. Cultured pearl and diamond gold bangle
 c. 1970
 South Sea golden pearls measuring
 approximately 12.00 x 14.00 mm,
 diamonds, white and yellow gold,
 platinum



132. Jade ring
 Jade, gold



**137. Seed pearl necklace with
 gem-set clasps**
 American
 c. 1960
 Seed pearls, diamonds, cabochon
 rubies and sapphires, gold.



133. Two gold bracelets
 One with gold ball set with colored
 gemstone
 One with gold ball set with turquoise



**138. Pair of diamond and wirework
 hoop earrings**
 Sterlé, Paris, no. 3318, c. 1960
 Diamonds, gold
 H: 1 3/4 inches



**134. Sapphire bead single strand
 necklace**
 Seaman Schepps, New York, 1955
 Sapphire beads, cabochon sapphires,
 gold
 L: 16 1/2 inches
 Doris Duke purchased this
 necklace from Seaman Schepps
 on December 1, 1955.



**139. Multistrand chalcedony bead
 and simulated ruby bead bracelet**
 Flato, New York, 1940
 Chalcedony beads, simulated ruby
 beads, diamonds, gold
 L: 8 3/4 inches
 Doris Duke purchased this bracelet
 from Paul Flato on January 2, 1940.



**135. Cultured pearl and diamond
 flower brooch**
 c. 1970
 South Sea golden pearl, diamonds,
 white and yellow gold.
 South Sea golden pearl measuring
 approximately 14.50 mm.
 H: 1 3/4 inches



140. Group of gemstones
 Comprising thirteen emerald-cut
 aquamarines



141. Group of diamonds

Comprising one cushion-cut diamond, three circular-cut diamonds and twenty-three baguette-cut diamonds



146. Ring and bracelet set with topaz

Seaman Schepps, New York, 1940

Topaz, gold

Length of bracelet: 6 1/2 inches

Doris Duke purchased the bracelet from Seaman Schepps on December 12, 1940.



142. Diamond and gold mesh evening purse

American, c. 1950

Diamonds, woven gold

L: 7 inches



147. Amethyst and gold brooch

American, c. 1945

Amethysts, gold

H: 1 3/4 inches



143. Sterling silver *minaudiere*

Gucci, Italian, c. 1950

Sterling silver, black onyx

L: 6 inches



148. Sapphire and diamond hair pin

Cartier, Paris, New York

Sapphires, diamonds, gold, platinum

H: 1 1/2 inches



144. Turquoise, lapis lazuli, and diamond cluster brooch

American, c. 1965

Turquoise, lapis lazuli, diamonds, gold

D: 1 1/2 inches



149. Citrine ear pendants

American

c. 1950

H: 1 1/2 inches



145. Citrine gold flower brooch

American, c. 1945

Citrines, gold

H: 2 1/4 inches L: 4 1/4 inches



150. A tumbled semi-precious gem-set and gold necklace



151. Single strand pearl necklace
Pearls, diamond



156. Group of gold, platinum, and diamond-set mounts
Diamonds, emerald, gold, platinum



152. Sapphire and sterling silver cigarette case
Marchak, Paris, c. 1940
Sapphires, sterling silver, gold
L: 4 1/2 inches W: 3 1/4 inches



157. Pair of Spanish colonial emerald and gold pendants
Emeralds, gold
H: 2 1/16 inches



153. Sterling silver desk clock
Bulgari, Italian
Sterling silver, steel, glass; in fitted black leather case
H: 3 1/2 inches



158. A gold pre-Columbian-style, double-head charm
Gold



154. Foil-back topaz, chrysolite, and silver tree brooch
Portuguese
Foil back topaz, chrysolite, silver
H: 4 3/8 inches



159. A group of loose stones
Comprising five ruby beads, one oval opal, two oval-cut sapphires, two baguette-cut sapphires, one rectangular-cut emerald, one pear-shaped ruby



155. Group of costume jewelry
Comprising a peridot and metal branch brooch, a bangle, a blue bead ear pendant, a simulated sapphire, diamond rock crystal and white metal clip, a simulated diamond and yellow metal twin heart pin, a yellow metal rabbit compact signed Flato, a silver compact, a silver clip, a velvet purse, unmounted tumbled turquoise, unmounted opal, a coral bead, a yellow metal charm



160. Emerald and gold hair barrette
Seaman Schepps, New York, 1954
Emeralds, gold
L: 1 1/8 inches
Doris Duke purchased the hair barrette from Seaman Schepps on July 1, 1954.



161. Ruby, opal, diamond, and gold flower cluster

American
Rubies, opals, diamonds, gold
H: 1 ½ inches



166. Pair of opal drop ear pendants

American
Opals, diamonds, enamel, gold
H: 1 ¼ inches



162. Carved opal and diamond crab brooch

American, c. 1960
Carved opal, diamonds, silver, gold
H: 1 ¼ inches



167. Gold coin pendant on a chain

Austrian gold coin mounted in a gold pendant suspended from a gold box chain



163. Cabochon ruby, cultured pearl, and gold "puppet" brooch

Van Cleef & Arpels, New York, c. 1950
Gold, cabochon ruby, cultured pearls
H: 2 inches



168. Pre-Columbian-style gold pendant/brooch

Gold, enamel, satin cord
H: 1 ⅞ inches



164. Carved ruby and diamond hummingbird pin

American
Carved cabochon rubies, diamonds, gold, platinum
L: 1 ¼ inches



169. Gold-mounted lion's claw pendant with chain

Monet
Lion's claw, cabochon green glass, gold; chain-plated gold
Height of pendant: 3 ⅞ inches



165. Ruby, diamond, and gold elephant brooch

American, c. 1960
Gold, diamonds, rubies
L: 1 ⅞ inches



170. Enamel bead with foliate design

Foil-back cabochon emeralds, foil-back cabochon rubies, enamel, gold
H: 1 ¾ inches



171. Pair of diamond, ruby, and enamel rigid gold bangles

Probably Lucknow, Late 19th century
Rubies, diamonds in *kundan* settings, enamel, gold

Doris Duke purchased the bangles at Parke-Bernet Galleries on May 15, 1969, for \$700.



176. Pair of white sapphire and enameled gold earrings

India, 19th century
White sapphires, seed pearls, enamel, gold
D: 2 ¼ inches



172. Pair of diamond, pearl, and enamel rigid gold bangles

India, Late 17th or early 18th century
Pearls, diamonds in *kundan* settings, enamel, gold; inside with polychrome enamel



177. Pair of white sapphire and enameled gold buttons

Jaipur, Early 20th century
White sapphires, enamel, gold; reverse with polychrome enamel
W: ¼ inches



173. Diamonds, emeralds, rubies, and gold hair ornament

Probably Jaipur, 20th century
Emeralds, rubies, diamonds in *kundan* settings, pearls, enamel, gold; reverse with polychrome enamel
W: 2 ⅞ inches



178. Pair of white sapphire and enamel buttons

Jaipur, Early 20th century
White sapphires, enamel, gold; reverse with polychrome enamel
W: ¼ inches



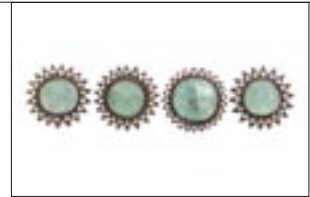
174. Pair of white sapphire, pearls, enamel, and gold earrings

(Each originally a panel from a bracelet)
Hyderabad or Jaipur, Late 18th century
White sapphires, pearls, enamel, gold
W: 1 ⅜ inches



179. Set of four cabochon beryl and opal buttons

Second half of 19th century
Beryls, opals, silver
D: 1 ¼ inches



175. Set of seven Navaratna buttons

Jaipur, Late 19th century
Chrysoberyl, coral, blister-pearl, diamonds, emeralds, colored glass, gold; reverse with polychrome enamel
D: ¾ inches



180. Set of white zircon buttons

India, c. 1900
White zircons, gold



181. Set of red stone buttons
India, c. 1900
Red stones, gold



186. Gem-set and enamel composite pendant
Upper rosette section, early 18th century
White sapphires, gold; reverse with polychrome enamel
Lower section, early 19th century
White sapphires, seed pearls, rubies, gold
H: 4 7/8 inches L: 5 inches



182. Set of five gold buttons
India, 20th century
Emeralds, rubies, diamonds, gold



187. Pair of gem-set and enameled gold ear ornaments
Jaipur, 20th century
Colored gemstones, seed pearls, green glass beads, enamel, gold
Doris Duke purchased the ear ornaments at Hammer Galleries, New York, on October 1, 1941 for \$700.



183. Pair of gem-set and enamel rigid bangles
Late 19th century
Colored gemstones, pearls, enamel, gold



188. Pair of bracelets
India, 19th century
Beryl beads, cord
L: 6 3/4 inches



184. Gem-set and enamel rigid bangle
Jaipur, 20th century
Beryl, corundum, white sapphires, enamel, gold; inside with polychrome enamel



189. Pair of diamond, seed pearl, and enamel earrings
India, Early 20th century
Diamonds, seed pearls, enamel, gold



185. Gem-set and enamel rigid bangle
Jaipur, 20th century
White sapphires, diamonds, rubies, enamel, gold; inside with polychrome enamel



190. Ruby and pearl shoulder ornament
Early 20th century
Cabochon rubies, pearls, gold
L: 6 1/4 inches



191. Ruby and pearl earrings
(en suite with ruby and pearl shoulder ornament)
Early 20th century
Cabochon rubies, pearls, gold
W: 1 inch



196. Enameled pendant perfume flask in the form of a *botel*
Jaipur, Late 19th or early 20th century
Enamel, diamonds, pearls, green glass beads, gold
H: 1 1/8 inches



192. Uncut emerald, ruby, and seed pearl necklace
Jaipur, Early 20th century
Uncut emeralds and rubies, seed pearls, diamonds, enamel, gold



197. Diamond pendant necklace
India, 19th century
Diamonds, gold; reverse with polychrome enamel



193. Diamond and enamel bead necklace
India, 20th century
Diamonds, freshwater pearls, enamel, gold



198. Pair of ruby, white zircon, and enamel rigid bangles with bird terminals
Jaipur, 20th century

Rubies and white zircons in *kundan* settings, enamel, gold; inside with polychrome enamel



194. Gem-set necklace terminal panel
India, Late 19th century
Colored gemstones, gold



199. Ruby, white zircon, and enamel rigid bangle

India, 20th century
Rubies and white zircons in *kundan* settings, enamel, gold; inside with polychrome enamel



195. Diamond and white sapphire bead
India
Diamonds, white sapphires, rubies, gold
H: 1 inch



200. White zircon, seed pearl, and enamel earrings

India, 18th or 19th century
White zircons, seed pearls, enamel, gold
L: 2 1/2 inches



201. Diamond and pearl necklace

India

Diamonds, pearls, green glass beads, gold, cord; reverse with polychrome enamel

Doris Duke purchased the necklace at Gazdar Private, Ltd., in Bombay on October 14, 1958.



206. Enamel pendant

India, 18th century

Gold, enamel, cord



202. Ruby and brass bracelet

India, 20th century

Cabochon rubies, seed pearls, brass

L: 8 3/4 inches



207. Pearl, white zircon, and enamel ring

India, 19th century

White zircons, pearls, turquoise beads, enamel, gold



203. White zircon necklace

India, Late 19th or early 20th century

White zircons, seed pearls, green glass beads, gold; reverse with polychrome enamel



208. Freshwater pearl and gold bracelet

Jaipur, Late 19th century

Gold, diamonds, enamel, freshwater pearls



204. Diamond and enamel long chain necklace

India, Early 20th century

Diamonds, enamel, gold woven cord



209. Gem-set bracelet

India, 20th century

Rubies, sapphires, coral, cat's eye, white and blue stones, enamel, gold; reverse with polychrome enamel

L: 7 inches



205. Enamel fish necklace

India, 20th century

Diamonds, pearls, green glass beads, enamel, gold, cord



210. Gem-set rectangular panel

India, 19th century

Diamond, emerald, ruby, sapphire, coral, garnet, pearl, enamel, gold, black velvet band

Doris Duke purchased the gem-set panel from David Webb on November 30, 1957. She then had John Frederic make it into a belt.



211. Gem-set gold belt
India
Sapphire, white zircons, gold
L: 32 inches



216. Gold serpent ring
India
Gold



212. Gem-set earrings
India, 19th century
Cabochon rubies, diamonds, gold;
reverse with polychrome enamel



217. Three gem-set gold rings
India, 20th century
One with rubies, gold
One with ruby, gold
One with diamonds, gold



213. Pair of gem-set and gold earrings
India, 19th century
Originally a pair of buttons, later
made into earrings by David Webb
Diamonds, colored gemstones, enamel,
gold



218. Pendant and long chain necklace
India, 19th century
Seed pearls, colored gemstones,
enamel, gold



214. Pair of enamel ear clips
India, 20th century
Originally a pair of buttons, later
made into earrings by David Webb
White zircons, enamel, gold



219. Pair of diamond earrings
India, 19th century
Diamonds, gold, silver
L: 2 3/4 inches
(converted from a sarpech)



215. Three enamel and gold rings
India
Enamel, gold; one set with gemstones



220. Silver-gilt bracelet
India
Synthetic rubies, silver gilt
L: 7 inches



221. Pair of silver-gilt foliate rigid bangles
 India, 20th century
 Silver gilt



226. Pair of white zircon and enamel gold bangles
 India, 19th century
 White zircons, enamel, gold, cord



222. Ruby and diamond gold bangle
 India
 Rubies, diamonds, gold



227. Pair of gem-set ear ornaments
 India, 20th century
 Rubies, white zircons, seed pearls, green glass beads, gold; reverse with polychrome enamel
 L: 4 ¼ inches



223. Two silver-gilt filigree bangles
 India, 20th century
 Silver gilt



228. Pair of gem-set ear ornaments
 India, 20th century
 Rubies, white zircons, seed pearls, red glass beads, gold; reverse with polychrome enamel
 H: 3 ½ inches



224. Pair of ruby, emerald, diamond, and pearl rigid bangles
 India
 Rubies, emeralds, diamonds, pearls, gold



229. Pair of gem-set ear pendants
 Southern India, 20th century
 Enamel, rubies, emeralds, pearls, gold



225. Pair of emerald and diamond earrings
 India, 19th or 20th century
 Emeralds, diamonds, enamel, gold; reverse with polychrome enamel
 L: 3 inches
 Doris Duke purchased the earrings at Tula Ram, Jeweller, in Delhi on March 30, 1957.



230. Pair of ruby and emerald bracelets
 India, 19th century
 Rubies, emeralds, enamel, gold, velvet band
 L: 6 ¾ inches



231. Turquoise and gold bracelet
India, 19th century
Turquoise, gold, silk cord
L: 7 inches



236. Pair of ruby and gold rigid bangles
India, 20th century
Rubies, gold; inside with polychrome enamel



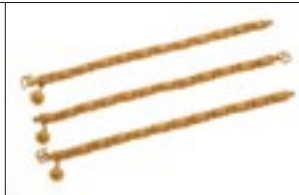
232. Diamond and gold bracelet
India, 19th or 20th century
Diamonds, gold; reverse with polychrome enamel
Length of central section: 4 1/2 inches



237. Pair of ruby and gold rigid bangles
India, 19th or 20th century
Rubies, diamonds, gold; inside with polychrome enamel



233. A set of three gold bracelets
India, 20th century
Gold
L: 6 3/4 inches



238. Set of four white sapphire and enamel rigid bangles
India, 19th or 20th century
White sapphires, enamel, gold



234. Pair of diamond, gold, and green glass earrings
India, 20th century
Diamonds, green glass, gold; reverse with polychrome enamel



239. Diamond and enamel gold necklace
India, 19th century
Diamonds, seed pearls, enamel, gold; reverse with polychrome enamel



235. Pair of seed pearl and enamel ear pendants
India, 20th century
Diamonds, seed pearls, green glass beads, enamel, gold
L: 2 inches



240. Pair of ruby bead and diamond flowerhead ear clips
India, 20th century
Ruby beads, diamonds, gold
D: 1 inch
Doris Duke purchased these ear clips from the Parke-Bernet Galleries' sale, "Important Jewelry Collection of Madame Ganna Walska," on April 1, 1971, for \$200.



241. Diamond and ruby gold belt

India, 19th or 20th century
Diamonds, cabochon rubies,
emeralds, gold; coil link band
L: 27 inches

Doris Duke purchased the belt from
the Art Trading Company, New York,
on July 11, 1941, for \$450.



**246. Carved emerald, ruby, diamond,
and enamel pendant**

India, 18th century
Carved emerald, diamonds, rubies,
gold; reverse with polychrome enamel;
silk cord
H: 1 ½ inches



**242. Pearl and gem-set pendant and
necklace**

India, 20th century
Colored gemstones, seed pearls,
enamel, gold, cord; reverse with
polychrome enamel



247. Gold chimera bangle

India, 20th century
Gold



243. Gem-set earrings

India, 20th century
Colored gemstones, gold; reverse with
polychrome enamel
L: 3 ½ inches



248. Emerald bead necklace

India, 20th century
Emerald beads, colored gemstones,
pearls, enamel, gold



**244. Diamond and seed pearl fringe
necklace**

India
Diamonds, pearls, seed pearls; reverse
with polychrome enamel



249. Gem-set plaque link bracelet

India, 20th century
Colored gemstones, blue beads, seed
pearls, gold
L: 5 ¾ inches



**245. Cabochon emerald, diamond and
pearl pendant**

India, 19th century
Foil-back emeralds, diamonds, baroque pearl,
gold; reverse with polychrome enamel; woven
gold chain
H: 3 ⅜ inches



**250. Two gem-set and glass
pendant brooches**

India, 20th century
One with red and green glass, pearls,
gold and attached to enameled bar
pin signed by Seaman Schepps
H: 3 inches
One with red and green glass, pearls,
rubies, gold
H: 2 ⅞ inches



251. Diamond and gold cluster ring
Southeast Asia
Diamonds, gold



256. Pair of red stone and silver-gilt tassel earrings
Southeast Asia
Red stone, silver gilt
L: 3 inches



252. Gem-set silver-gilt belt
Southeast Asia, 20th century
Diamonds, colored gemstones, silver gilt, mesh band



257. White zircon and silver-gilt brooch
Southeast Asia
20th century
White zircons, silver gilt
D: 2 1/8 inches



253. White zircon silver-gilt belt
Southeast Asia, 20th century
White zircons, silver gilt, mesh band
Length of buckle: 3 inches
Length of belt: 29 inches



258. White zircon and silver-gilt floral bracelet
Southeast Asia, 20th century
White zircons, silver gilt
L: 7 inches



254. Silver-gilt belt
Southeast Asia
Silver gilt
L: 27 1/4 inches



259. White zircon cluster clip
Southeast Asia
White zircons, silver gilt
H: 3 inches



255. White zircon, silver-gilt link chain necklace
Southeast Asia, 20th century
White zircons, silver gilt
L: 51 inches



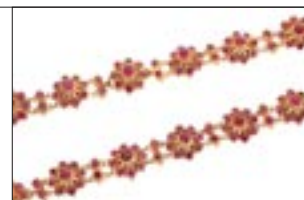
260. White zircon cluster brooch
Southeast Asia, 20th century
White zircons, silver gilt
D: 2 1/2 inches



261. White zircon armlet
Southeast Asia, 20th century
White zircons, silver gilt
L: 10 ¾ inches



266. Synthetic ruby and silver-gilt long chain necklace
Southeast Asia
Synthetic rubies, silver gilt
L: 49 inches



262. Pair of white zircon and silver-gilt tassel earrings
Southeast Asia, 20th century
White zircons, silver gilt
L: 3 inches



267. Synthetic ruby and silver-gilt wreath brooch
Southeast Asia, 20th century
Synthetic rubies, silver gilt
D: 2 inches



263. White zircon and synthetic ruby bracelet
Southeast Asia
20th century
White zircons, synthetic rubies,
silver gilt
L: 6 ¼ inches



268. Synthetic ruby and silver-gilt foliate cluster bracelet
Southeast Asia, 20th century
Synthetic ruby, silver gilt
L: 6 ¼ inches



264. White zircon and silver-gilt, cluster-fringe necklace
Southeast Asia, 20th century
White zircons, silver gilt



269. Synthetic ruby silver-gilt belt
Southeast Asia, 20th century
Synthetic rubies, silver gilt
Length of buckle: 3 inches
Length of belt: 31 ½ inches



265. Diamond and gold pendant brooch
Southeast Asia, 20th century
Diamonds, gold, woven gold link neck chain
D: 2 ¼ inches



270. White zircon and silver-gilt pendant
Southeast Asia, 20th century
White zircons, silver gilt, woven chain
H: 4 inches



271. Synthetic ruby and gilt metal pendant

Southeast Asia, 20th century
Synthetic ruby, gilt metal, woven chain
H: 2 ¼ inches



275. Gem-set and gold bangle bracelet

Southeast Asia, 20th century
Colored gemstones, gold



272. Two groups of jewelry

Comprising Asian metal bracelets, coral necklaces, turquoise necklaces, single earrings, buttons, links, etc.



276. Pair of gold tassel earrings

Southeast Asia, 20th century
Gold
H: 1 ¾ inches



277. Three gold turban ornaments

Southeast Asia, 20th century
Gold
Length of longest: 5 inches



273. Pair of ruby, emerald, and diamond circular ear clips

Southeast Asia, 20th century
Rubies, emeralds, diamonds, gold
D: ¾ inches



278. Center section of Ottoman diamond and gold necklace

Mid 19th century
Diamonds, gold
L: 5 inches



274. Pair of white zircon and gold ear pendants

Southeast Asia
20th century
White zircons, silver gilt (with a matching panel with chain decoration)
Length of ear pendants: 2 ½ inches



279. An Ottoman diamond star and crescent brooch

Mid 19th century
Diamonds, gold
W: 1 ½ inches



280. An Ottoman diamond and gold floral spray brooch

Mid 19th century
Diamonds, gold

The central five-petal rosette is set *en tremblant*, a feature of diamond jewelry from the mid nineteenth century in which decorative elements are set on a tiny spring so that, when worn, it moves or “trembles.”

H: 4 inches



285. Gold and enamel bead necklace

Thai, 19th century
Gold, red stones, enamel



281. Silver-gilt and niello belt

Turkish, 20th century
Niello, enamel, silver gilt
Length of buckle: 2 3/4 inches
Length of belt: 32 1/2 inches



286. Gold and enamel turban pin

Thai, 19th century
Enamel, gold
L: 4 inches



282. Ruby and gold pendant

Persian or Central Asian, 16th or 17th century
Rubies, gold, gold woven chain



287. Two Medieval gold rings

Javanese
Rubies, cat's eye, gold



283. Gold and enameled pendant

Thai, 19th century
Diamonds, enamel, gold



288. Gem-set bracelet

Egyptian, 20th century
Amber, faience, lapis lazuli, silver
L: 8 3/4 inches



284. Diamond and enamel marriage ring

Thai, 19th century
Gold, rubies, enamel



289. Pair of jade bangles

China



290. Miniature green jade
gu-form vase
China
Jade
H: 5 7/8 inches



294. Gem-set hair pin
Siam
Colored gemstones, gold
H: 4 inches



291. Miniature dark green
jade altar garniture
China
Comprising a censer and cover, a pair
of *gu*-form beaker vases, and a pair of
pricket candlesticks.
Height: 5 inches



295. Cameo bracelet
Shell, gold
L: 7 7/8 inches



292. Gem-set hair ornament
Siam
Emeralds, rubies, diamonds, chased
gold



296. Pair of doll's gold buckles
and parts of two other items
Gold, diamonds



293. Gem-set hair ornaments
Siam
Colored gemstones, gilt metal
H: 1 inch

